

**Manno-oligosaccharide attenuates inflammation and intestinal
epithelium injury in weaned pigs upon Enterotoxigenic *Escherichia*
Coli K88 challenge**

En Yu^{1,2}, Daiwen Chen^{1,2}, Bing Yu^{1,2}, Zhiqing Huang^{1,2}, Xiangbing Mao^{1,2}, Ping
Zheng^{1,2}, Yuheng Luo^{1,2}, Yin Heng³, Jie Yu^{1,2}, Junqiu Luo^{1,2}, Hui Yan^{1,2}, Jun He^{1,2*}

¹Animal Nutrition Research Institute, Sichuan Agricultural University, Chengdu,
Sichuan 611130, P. R. China;

²Key Laboratory of Animal Disease-Resistance Nutrition, Sichuan Province, Chengdu,
Sichuan 625014, P. R. China

³Dalian Institute of Chemical Physics, Chinese Academy of Sciences, Liaoning
Province, Dalian, 116023, P. R. China



This peer-reviewed article has been accepted for publication but not yet copyedited or typeset, and so may be subject to change during the production process. The article is considered published and may be cited using its DOI

10.1017/S0007114520004948

The British Journal of Nutrition is published by Cambridge University Press on behalf of The Nutrition Society

Accepted manuscript

E. Yu: 1271454755@qq.com

D.W. Chen: dwchen@sicau.edu.cn

B. Yu: ybingtian@163.com

Z.Q. Huang: zqhuang@sicau.edu.cn

X.B. Mao: acatmxb2003@163.com

P. Zheng: Zpind05@163.com

Y.H. Luo: luoluo212@126.com

Y. Heng: yinheng@dicp.ac.cn

J. Yu: jerryujie@163.com

J. Q. Luo: 770353053@qq.com

H. Yan: 171737138@qq.com J.

He: hejun8067@163.com

*Correspondence: Jun He. Animal Nutrition Institute, Sichuan Agricultural University, Chengdu, Sichuan 611130, People's Republic of China. Email: hejun8067@163.com

Abstract

To explore the effect of mannan-oligosaccharide (MOS) on intestinal health in weaned pigs upon Enterotoxigenic *Escherichia coli* K88 (ETEC) challenge, thirty-two male weaned pigs were randomly assigned into four groups. Pigs fed with a basal diet or basal diet containing MOS (0.6 g/kg) were orally infused with ETEC or culture medium. Results showed that MOS significantly elevated the digestibility of crude protein (CP) and gross energy (GE) in both ETEC-challenged and non-challenged pigs ($P < 0.05$). MOS also elevated serum concentrations of immunoglobulin (Ig) A and IgM ($P < 0.05$), but decreased serum concentrations of tumor necrosis factor (TNF)- α , IL-1 β , and IL-6 ($P < 0.05$) in ETEC-challenged pigs. Interestingly, MOS increased villus height and the ratio of villus height to crypt depth (V/C) in duodenum and ileum ($P < 0.05$). MOS also increased duodenal sucrase and ileal lactase activity in ETEC-challenged pigs ($P < 0.05$). MOS decreased the abundance of *Escherichia coli*, but increased the abundance of *Lactobacillus*, *Bifidobacterium*, and *Bacillus* in cecum ($P < 0.05$). Importantly, MOS not only elevated the expression levels of zonula occludins-1 (ZO-1), claudin-1, and glucose transporter-2 (GLUT-2) in duodenum ($P < 0.05$), but also elevated the expression levels of ZO-1, GLUT-2, and L-type amino acid transporter-1 (LAT-1) in ileum ($P < 0.05$) upon ETEC challenge. These results suggested that MOS can alleviate inflammation and intestinal injury in weaned pigs upon ETEC challenge, which was associated with suppressed secretion of inflammatory cytokines and elevated serum immunoglobulins, as well as improved intestinal epithelium functions and microbiota.

Keywords: Manno-oligosaccharide; Inflammation; Weaned pigs; Intestinal epithelium; Immunity.

Introduction

Enterotoxigenic *Escherichia coli* (ETEC) is one of the major bacterial causes leading to post-weaning diarrhea in pigs ^(1,2). Currently, the pathogenesis of diarrhea induced by ETEC has been studied in detail. For instance, several ETEC strains were found to function through producing enterotoxins that act on the small intestines and result in secretion of fluids and electrolytes, causing diarrhea and intestinal injury ^(3,4). In last decades, antibiotics have been widely used to prevent various ETEC-induced diarrheas in pig production. Moreover, antibiotics also showed a significant growth-promoting effect on pigs and other domestic animals ⁽⁵⁾. However, long-term utilization or over-dose utilization of antibiotics may result in residues in animal products and contribute to increased abundance of antibiotic resistant bacteria ^(5,6). Therefore, developing of substitutes for conventionally used antibiotics has attracted considerable research interest worldwide.

Prebiotics are one of favorable alternatives, as they can promote competitive exclusion of pathogenic microbes and selective colonization by beneficial microbes ⁽⁷⁾. Oligosaccharides were believed to be the main form of prebiotics, which is a type of carbohydrate of low degree of polymerization (DP) and low molecular weight composed of monosaccharides ^(8,9). Manno-oligosaccharides (MOS), are non-digestible oligosaccharides produced by enzymatic degradation of mannan polymers. Currently, most of the MOS products are derived from sugar polymers present in the cell wall of yeast ⁽⁴⁾. The MOS were previously found to improve

human health by promoting the growth of intestinal beneficial microflora, decreasing enteric pathogenic bacteria, and reducing the fat absorption^(4,10–12). MOS has also been widely used in animal nutrition and feed industry. For instance, dietary supplementation of MOS was found to improve the growth performance and intestinal development in pigs and poultry^(13–15)

Although numerous studies suggested a prebiotic effect of MOS on pigs and other animal species^(14,16–18), few of them explored the effect of MOS on intestinal health in weaned pigs exposure to ETEC challenge. Moreover, most studies on pigs utilized the *Salmonella* as pathogenic bacteria, and the ETEC was only utilized *in vitro*^(19,20). As compared to the *Salmonella*, ETEC can specifically induce intestinal injury by adhesion to intestinal epithelial cells^(3,4). Therefore, the ETEC-challenged model was utilized in this study. We hypothesis that MOS may attenuate bacteria-induced inflammation, as the prebiotics are believed to beneficially manipulate the gut microflora and decrease enteric pathogenic bacteria^(10–12). In this study, we explored the effect of dietary MOS supplementation on nutrient digestibility, inflammatory response, intestinal epithelium function, and selected bacterial populations in weaned pigs upon ETEC challenge. This study will also provide convincing evidence on the novel prebiotic effect of MOS and offer key insights into its potential mechanisms of action.

Materials and methods

All experimental protocols used in the animal experiment were approved by the Institutional Animal Care and Use Committee of Sichuan Agricultural University (No.20181105). MOS ($\geq 20\%$) was purchased from the Shanghai Lanpu Bio. Co., Ltd. (Shanghai, China). The product is derived from the degradation of konjac glucomannan (KGM) by glucomannan hydrolase. It is a series of glucomannan oligosaccharides with DP 2-9, which is composed of glucose and mannose units through β -1,4 glycosidic bonds in a ratio of approximately 1:1.5.

Bacterial Strains and Culture

Enterotoxigenic *E. coli* K88 (ETEC: serotype O149:K91: K88ac) was obtained from the China Institute of Veterinary Drugs Control (Beijing, China). Luria-Bertani (LB) and LB agar broth were prepared (Yeast Extract, 0.5 g; NaCl, 1 g; Peptone, 1 g; double-distilled water, 50 mL; agar powder, 2 % for LB agar broth) and sterilized under 121 °C, 0.11 MPa for 20 min (pH = 6). The bacteria were resuscitated in 3 mL of Luria-Bertani (LB) broth at 37 °C for 24 h with shaking and plated onto LB agar. A single colony was inoculated into 50 mL of LB broth, cultured overnight at 37 °C and 250 rpm, and then subcultured and serially diluted on LB agar for bacterial enumeration⁽²¹⁾.

Animal diets and experimental design

A total of 32 male Duroc \times Landrace \times Yorkshire pigs weaned at 21 d (with an average body weight of 6.48 ± 0.14 kg) were randomly allotted into a 2 (MOS) \times 2

(ETEC) factorial experiment of four treatments composed of CON (pigs were fed with a basal diet), CMOS (pigs were fed with basal diet containing 3 g/kg MOS product), ECON (pigs were fed with a basal diet and challenged by ETEC), EMOS (pigs were fed with basal diet containing 3 g/kg MOS product and challenged by ETEC). As the purity of the MOS product is 20%, the final concentration of the pure MOS in the diet is 0.6 g/kg. The number of pigs used in each group (n=8) meet this minimal requirement of statistic for digestible trials or mechanism studies (e.g. six replicates are acceptable) ^(21,22). Pigs were received the same parental nutrition and management (e.g. sows were fed with the same diet, synchronization estrous). The trial last for 21 d. On 19 d, the challenge groups were orally treated with 100 mL of LB culture containing 1×10^{10} CFU/mL of ETEC by using an orogastric tube last for 3 d, whereas the non-challenge groups were orally treated with equivalent amount of culture medium ⁽²³⁾. The basal diet (Table 1) was formulated to meet the swine nutrient requirements recommended by National Research Council 2012 (NRC2012) ⁽²⁴⁾. Pigs were individually housed in 1.5×0.7 m² metabolism cage and were given ad libitum access to feed and fresh water with the room temperature controlled between 25-28 °C, relative humidity 65% \pm 5%.

Sample collection

Feed samples were collected at the beginning of the experiment and stored at -20 °C for nutrient analysis, during the d 14 - 17 of the experiment, fresh fecal samples were collected immediately after excretion from pigs in each cage, weighed,

and adding 10 mL 10% H₂SO₄ solution to per 100 g of fresh fecal. The feed and fecal samples were dried at 65 °C for 2 d, and ground to pass through a 1-mesh screen, and then stored at -20 °C until measurement for nutrients digestibility. Blood samples were obtained on d 22 by jugular vein puncture and placed in two 10-mL vacuum tubes. One for blood parameters analyzed and the serum was collected after centrifugation of another tube at 3,500 × g and stored at -20 °C until the serum indexes analysis. At the end of the trial, pigs were anesthetized by intravenous injection with sodium pentobarbital (200 mg/kg BW), and the tissues of the duodenum, jejunum and ileum were immediately isolated. At the same time, the duodenal, jejunal and ileal middle segments (4 cm obtained from the middle of each intestine) were gently flushed with ice-cold phosphate-buffered saline (PBS), followed by fixation in 4% paraformaldehyde solution for morphological analyses. Besides, digesta from cecum was collected and the intestinal mucosa obtained from the residual intestinal segments with scalpel blade and place in frozen tube then frozen by immersion in liquid nitrogen, and stored at -80 °C until analysis.

Growth performance evaluation

All pigs were weighed before feeding on the d 1, 19, 22, respectively. Feed intake and waste feed were recorded every day throughout the experiment which could be provided to calculate the average daily feed intake (ADFI), average daily gain (ADG) and the feed: gain ratio (F: G) (the type of scale used in this study is electronic scale; 0-1kg, 0-20 kg, respectively).

Apparent total tract nutrient digestibility analysis

The frozen dried and milled feed and fecal samples were used for nutrient digestibility analysis, which uses acid insoluble ash (AIA) as endogenous indicators, a method described by the Chinese National Standard (GB/T23742-2009). The dry matter (DM), CP, ether extract (EE) and Ash contents were determined according to AOAC⁽²⁵⁾, whereas the GE content was measured by an adiabatic bomb calorimeter (LECO, St. Joseph, Michigan, USA) to calculate the apparent total tract digestibility. All contents were calculated by following formula: $(100 - A1F2/A2F1 \times 100)$ ⁽²⁶⁾. A1: digesta nutrient; A2: digesta AIA; F1: diet AIA; F2: digesta AIA.

Serum Proinflammatory cytokines and immunoglobulin detection

The concentration of Proinflammatory cytokines (TNF- α , IL-1 β and IL-6) and immunoglobulin (IgG, IgM, and IgA) in serum were determined followed by the instructions of a commercial available porcine Enzyme-Linked Immunosorbent Assay (ELISA) kits (Jiangsu Jingmei Biotechnology Co., Ltd., Yancheng, China). All procedures were guided by manuals of the kits. For quantification, the standards provided in the kits were used to generate standard curves.

Histomorphology analysis of each intestinal segment

The fixed with 4% paraformaldehyde intestinal segments were dehydrated through a graded series of ethanol and then embedded in paraffin⁽²⁷⁾. Cross-sections of each sample were prepared, stained with haematoxylin and eosin (H&E), and then sealed with neutral resin. Finally, ultrathin sections of the duodenal, jejunal and ileal samples

were examined for crypt depth and villus height with image processing and analysis system (Image-Pro Plus 6.0). The method of measurement of crypt depth and villus height was followed by King's and Wan's. A total of 10 intact, well-oriented, crypt-villus units were analyzed in triplicate per intestinal segment^(27,28). The ratio of villus height to crypt depth (V: C) was calculated from the datas described above.

Enzyme activity

The frozen duodenal, jejunal and ileal mucosa were homogenated in chilled saline at a ratio of 1: 9 (w/v) for 15 min, The homogenate was centrifuged at $3500 \times g$ for 10 min at 4 °C and the supernatant was used in spectrophotometric assays for protein content, which used to calculate the AKP (alkaline phosphatase) and digestive enzymes (Lactase, Sucrase, and Maltase) activity following the instructions described by Commercial kits (Jiancheng Bioengineering Ltd, Nanjing, P. R. China). Enzyme activity was defined as hydrolysis of 1mol of the substrate per mg of protein tissue per minute under the condition of 37 °C, pH = 6.0.

Caecal microbiological analysis

Approximately 200 mg caecal digesta was weighed and treated using the Stool DNA Kits (Omega Bio-Tek, Doraville, CA, USA) following the manufacturer's instruction to extract total DNA for quantification real-time PCR, which was performed by conventional PCR on the Opticon DNA Engine (Bio-Rad). Total bacteria were detected by the reaction which runs in a volume of 25 μL with 1 μL of forward and 1 μL of reverse primers (100 nM), 12.5 μL SYBR Premix Ex Taq (2 \times

concentrated), 2 μL template DNA, 1 μL 50 \times ROX Reference Dye*3 and 7.5 μL of RNase-Free ddH₂O. The SuperReal PreMix (Probe) kit (Tiangen Biotech Co., Ltd., Beijing, China) was used for *Lactobacillus*, *E. coli*, *Bacillus* and *Bifidobacterium* detection and primers and fluorescent oligonucleotide probes presented in Table S1. Each reaction was run in a volume of 25 μL with 12.5 μL 2 \times Super Real PreMix (Probe), 1 μL of forward and 1 μL of reverse primers (100 nM), 1 μL 50 \times ROX Reference Dye*3, 1 μL probe (100 nM), 2 μL DNA and 6.5 μL of RNase-Free ddH₂O. All reaction protocol was composed of one cycle of pre-denaturation at 95 °C for 15 min; forty cycles of denaturation at 95 °C for 3 s; annealing and extension at 60 °C for 30 s. The cycle threshold (Ct) values and baseline settings were determined by automatic analysis settings, and the copy numbers of the target group for each reaction were calculated from the standard curves, which were generated by constructing standard plasmids by a 10-fold serial dilution of plasmid DNA (1×10^1 to 1×10^9 copies/ μL).

Isolation and reverse transcription of RNA from intestinal mucosa and q-PCR

The frozen duodenal, jejunal and ileal mucosa samples (about 0.1 g) were ground in liquid nitrogen and homogenized in 1 mL of RNAiso Plus (Takara Biotechnology Co., Ltd., Dalian, China) to extract total RNA followed the manufacturer's instructions, and the purity and concentration of total RNA were detected by using a spectrophotometer (NanoDrop 2000, Thermo Fisher Scientific, Inc., Waltham, MA, USA), samples which OD₂₆₀/OD₂₈₀ ratio ranged from 1.8 to 2.0 were deemed

appropriate. Subsequently, a volume equivalent to 1 µg total RNA from each duodenal, jejunal, and ileal sample was used for reverse transcription into cDNA, which based on the protocol of PrimeScript™ RT reagent kit with gDNA Eraser (Takara Biotechnology Co., Ltd). This process consists of two steps: I: 37 °C for 15 min, II: 85 °C for 5 s.

The expression level of the target gene in intestinal mucosa was quantified using q-PCR, the oligonucleotide primers sequences used in q-PCR were presented in Table S1, qPCR was performed with the SYBR® Green PCR I PCR reagents (Takara Bio Inc., Dalian, China) using a CFX96 Real-Time PCR Detection System (Bio-Rad Laboratories, Hercules, CA, USA). All cDNA samples were detected in triplicate. The reaction mixture (10 µL) contained 5 µL SYBR Premix Ex Taq II (Tli RNaseH Plus), 0.5 µL forward primer, 0.5 µL reverse primer, 1 µL cDNA and 3 µL RNase-Free water. The protocol used in q-PCR was as followed: 95 °C for 30 s, followed by 40 cycles: at 95 °C for 5 s and 60 °C for 34 s. The generated Gene-specific amplification products were confirmed by melting curve analysis after each real-time quantitative PCR assay. The housekeeping gene β-actin was used to standardize the mRNA expression level of target genes, which calculated based on the $2^{-\Delta\Delta Ct}$ method ⁽²⁹⁾.

Sample size calculation and Statistical analysis

The minimal sample size was calculated based on the experimental design (repeated-measures, between factors ANOVA) determining the MOS × ETEC effect to the intestinal health as the primary outcome measure. We used G*Power software

(version 3.1.9.2) for the power analysis with following variables; the power = 0.8, significant level = 0.05, and effect size = 0.35 in the experiment. The effect size was estimated based on the results from a preliminary study. Hence, the required minimal sample size was five pigs per group.

The data collected before the ETEC challenge was analyzed by one-way ANOVA. After the challenge, the data were analyzed by two-way ANOVA with the General Linear Model (GLM) procedure of SPSS as a 2 (MOS) \times 2 (ETEC) factorial design. p -value < 0.05 was deemed to be significant and the p -value between 0.05 and 0.1 to show a significant trend. Duncan's multiple range test was used based on the analysis of ANOVA, which showed a significant difference. All data were analyzed by SPSS 24.0 (SPSS, Inc) and expressed as means with their standard errors.

Results

Effect of MOS on growth performance and nutrients digestibility in weaned pigs upon ETEC challenge

As shown in Table 2, the ADFI was significantly lower in the ECON group than in the CMOS group ($P < 0.05$). MOS supplementation did not affect the apparent digestibility of DM, EE, and CA (Table 3). The apparent digestibility of CP and GE was higher in the CMOS group than in the CON group ($P < 0.05$). Interestingly, MOS supplementation also increased the apparent digestibility of CP and GE in the ETEC-challenged pigs ($P < 0.05$).

Effect of MOS on serum immunogloblins and inflammatory cytokines in weaned

pigs upon ETEC challenge

As shown in Figure 1, there were no significant differences of serum immunoglobulins and inflammatory cytokines between the CON and EMOS group ($P > 0.05$). ETEC challenge led to a significant reduction of serum concentrations of IgA, IgG, and IgM in the weaned pigs (Figure 1). However, the serum concentrations of IgA and IgG were significantly higher in the EMOS group than in the ECON group ($P < 0.05$). Additionally, the ETEC challenge significantly elevated the serum concentrations of inflammatory cytokines such as the TNF- α , IL-1 β , and IL-6 ($P < 0.05$). However, MOS supplementation significantly reduced their concentrations in the ETEC-challenged pigs (Figure. 1).

Effect of MOS supplementation on intestinal morphology and mucosal enzyme activity in weaned pigs upon ETEC challenge

There were no significant differences of villus height and the ratio of villus height to crypt depth (V/C) between the CON and CMOS group ($P > 0.05$). ETEC challenge decreased the villus height and the ratio of V/C in the duodenum and ileum (Table 4 and Figure 2). However, MOS supplementation significantly elevated the villus height and the ratio of V/C in the ETEC-challenged pigs ($P < 0.05$). The crypt depth was also lower in the EMOS group than in the ECON group of ileum ($P < 0.05$). As shown in Table 5, the ETEC challenge not only decreased the activity of sucrase in the duodenal mucosa ($P < 0.05$), but also decreased the activities of lactase and maltase in the ileal mucosa ($P < 0.05$). The duodenal sucrase activity and ileal lactase

activity were both elevated by MOS in the ETEC-challenged pigs ($P < 0.05$).

Effect of MOS supplementation on intestinal microbial populations in weaned pigs upon ETEC challenge

As shown in Table 6, the ETEC challenge increased the abundance of *E. coli* in the cecum. However, MOS supplementation significantly decreased the abundance of *E. coli* in the cecum of ETEC-challenged pigs ($P < 0.05$). Interestingly, the abundance of beneficial bacteria such as the *Lactobacillus*, *Bifidobacterium*, and *Bacillus* were higher in the EMOS group than in the ECON group ($P < 0.05$).

Effect of MOS supplementation on expressions of critical genes involved in intestinal epithelium functions

As shown in Figure 3, the ETEC challenge not only decreased the expression levels of tight-junction protein ZO-1 in the duodenum and ileum ($P < 0.05$), but also decreased the expression levels of claudin-1 in the duodenum and jejunum ($P < 0.05$). However, MOS significantly elevated the expression levels of ZO-1 and claudin-1 in the duodenum of ETEC-challenged pigs ($P < 0.05$). The expression levels of GLUT-2 and CAT-1 in the duodenum were significantly lower in the ECON group than in the CON group ($P < 0.05$). Moreover, the expression level of LAT-1 was also lower in the ECON group than in the CON group in the ileum ($P < 0.05$). However, MOS supplementation not only elevated the expression levels of GLUT2 in the duodenum and ileum ($P < 0.05$), but also elevated the expression level of LAT-1 in the ileum in the ETEC-challenged pigs ($P < 0.05$).

Discussion

Intestinal tract is the main site of nutrient digestion and absorption and can serve as the first line of defenses against various harmful substances or pathogens ⁽³⁰⁾. For mammalian animals including the pigs, weaning is a critical developmental window which has been indicated by numerous morphological, enzymatic, and inflammatory changes in the intestinal tract ⁽³¹⁾. At this stage, pigs are susceptible to various bacterial pathogens, such as the ETEC, which may cause injury of the intestinal structure and integrity, consequently, decrease the rate of nutrient digestion and absorption ^(21,31,32). In the present study, we explored the effect of dietary MOS supplementation on nutrient digestibility, inflammatory response, and intestinal health in weaned pigs in response to ETEC challenge. We showed that MOS supplementation elevated the digestibility of CP and GE both in the non-challenged and ETEC-challenged pigs. The results are consistent with previous studies on pigs, broilers, and laying hens. Both results indicated that MOS supplementation could improve the digestibility of protein and amino acids ^(14,26,33).

Pro-inflammatory cytokines, such as IL-1 β , IL-6 and TNF- α , have been shown to mediate the host inflammatory process and initiate an effective inflammatory response to pathogen infection ^(34,35). In the present study, the ETEC challenge elevated the serum concentrations of TNF- α , IL-1 β , and IL-6, which is consistent with previous reports that ETEC challenge induced abrupt inflammatory response in pigs ⁽²¹⁾. However, MOS supplementation significantly attenuated the inflammatory response,

as indicated by decreased serum concentrations of these pro-inflammatory cytokines. Previous studies indicated that dietary MOS supplementation has a beneficial effect on host immunity in weaned pigs and sows^(36,37). In the present study, we found that MOS significantly elevated the serum concentrations of IgA and IgM in the ETEC-challenged pigs. The result is also consistent with previous studies on pigs and turkeys that were challenged by porcine reproductive and respiratory syndrome virus (PPRV) and ETEC K88, respectively^(38,39).

The integrity of intestinal villus-crypt structure is crucial for nutrient digestion and absorption⁽²⁸⁾. Disruption of the villus-crypt integrity (e.g. villous shedding, villus atrophy, and crypt hyperplasia) may lead to invasion of pathogenic bacteria and growth retardation^(32,40). In the present study, the ETEC challenge significantly decreased the villus height and the ratio of V/C in the duodenum and ileum, indicating injury of the intestinal mucosa. The result is also consistent with previous studies on pigs challenged by ETEC^(21,41). Interestingly, MOS supplementation attenuated the mucosa injury by increasing the villus height and the ratio of V/C. This is probably due to decreased secretion of inflammatory cytokines in the ETEC-challenged pigs by MOS supplementation, as the inflammatory cytokines (e.g. TNF- α and IL-6) were found to be capable of inducing intestinal epithelial cell apoptosis⁽⁴²⁾. The beneficial effect of MOS on intestinal morphology was also previously observed on pigs and broilers^(13,43). Moreover, the beneficial effects of MOS supplementation on intestinal health were indicated by the mucosal enzyme activities, as MOS not only elevated

duodenal sucrase activity, but also elevated the ileal lactase and maltase activities in the ETEC-challenged pigs.

Oligosaccharides cannot be digested in the upper digestive tract, but can be utilized by beneficial microorganisms in the lower digestive tract^(9,14). In this study, we also investigated major bacterial populations in the cecum and found that MOS elevated the abundance of beneficial bacteria such as the *Lactobacilli* and *Bacillus* in the non-challenged pigs. Importantly, MOS not only decreased the abundance of *Escherichia coli*, but also significantly increased the abundance of *Lactobacilli*, *Bifidobacterium*, and *Bacillus* in the ETEC-challenged pigs. Previous studies indicated that oligosaccharides such as the MOS and Fructooligosaccharides (FOS) not only reduced adhesion of ETEC to the intestinal epithelium^(44,45), but also elevated the abundance of beneficial bacteria such as the *Lactobacilli* and *Bifidobacterium* in porcine intestine^(46,47). Moreover, the beneficial effect of MOS on the intestinal microbiota was also observed on other animal species^(14,48).

To gain insights into the mechanisms underlying the MOS-regulated intestinal health, we further investigated the expression levels of several critical genes involved in the intestinal epithelium functions. Tight junctions, consisting of cytoplasmic scaffold proteins such as ZO-1, claudins, and occludin play a critical role in maintaining the intestinal barrier integrity and permeability^(49,50). In this study, ETEC challenge not only decreased the expression levels of ZO-1 in the duodenum and ileum, but also decreased the expression levels of claudin-1 in the duodenum and

jejunum, indicating disruption of the intestinal tight junctions. The result is consistent with previous studies which indicated that ETEC infection negatively regulated the expression of tight junction proteins ⁽²¹⁾. Interestingly, MOS supplementation not only elevated the expression levels of ZO-1 and claudin-1, but also elevated the expression levels of GLUT-2 and LAT-1 in the ETEC-challenged pigs. GLUT-2 is one of the major transporters for glucose absorption ⁽⁵¹⁾. While the LAT-1 is responsible for the transportation of L-type amino acids ⁽⁵²⁾. The elevated expressions of these nutrient transporters indicated an improved intestinal integrity and epithelium functions in pigs' exposure to the ETEC challenge.

Conclusions

Dietary MOS supplementation alleviates ETEC-induced intestinal injury in the weaned pigs, which was associated with suppressing of the inflammatory responses and attenuating of ETEC-induced changes in microbial populations, gut morphology and gut functions. The beneficial effects of MOS on the intestinal integrity and epithelium functions could make it an attractive prebiotic in the use of animal nutrition and feed industry.

Data Availability

The data used to support the findings of this study are available from the corresponding author upon request.

Conflict of Interest

The authors declare that there are no conflicts of interest.

Funding Statement

This work was supported by the Key Research and Development Program of Sichuan Province (2018NZDZX0005), and the National Natural Science Foundation of China (31972599).

Acknowledgments

We thank Wang Huifen, Wu Fali, and Liu Lei for their help during the animal trial and sample collections.

J. H. conceived and designed the experiments. E. Y. performed animal trial and wrote the manuscript. D. C., B. Y., X. M., P. Z., J. Y., H. Y., and Z. H. performed biochemical analysis. J. L., Y. L., and H. Y. gave constructive comments for the results and discussion of the manuscript. All authors have read and approved the final manuscript.

Figure legends

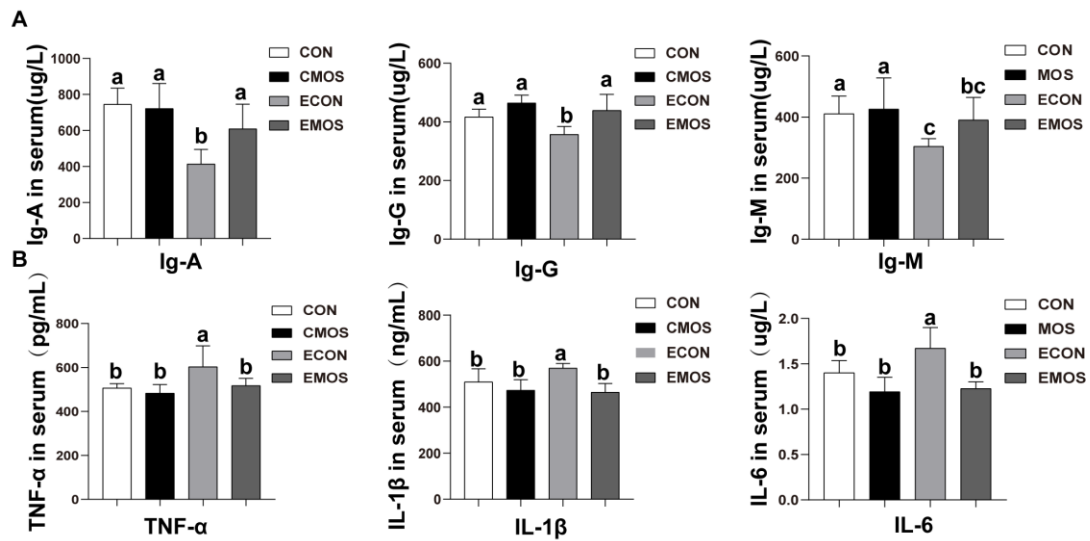


Figure 1. Effect of MOS supplementation on serum concentrations of inflammatory cytokines and immunoglobulins. TNF- α , tumor necrosis factor- α ; IL-1 β , interleukin1- β ; IL-6, interleukin-6; IgA, immunoglobulins A; IgG, immunoglobulins G; IgM, immunoglobulins M. ^{a, b, c} mean values within a row with unlike superscript letters were significantly different ($P < 0.05$). CON, pigs were fed with a basal diet; CMOS, pigs were fed with a MOS containing diet (0.6 g/kg); ECON, pigs were fed with a basal diet and challenged by ETEC; EMOS, pigs were fed with a MOS containing diet and challenged by ETEC.

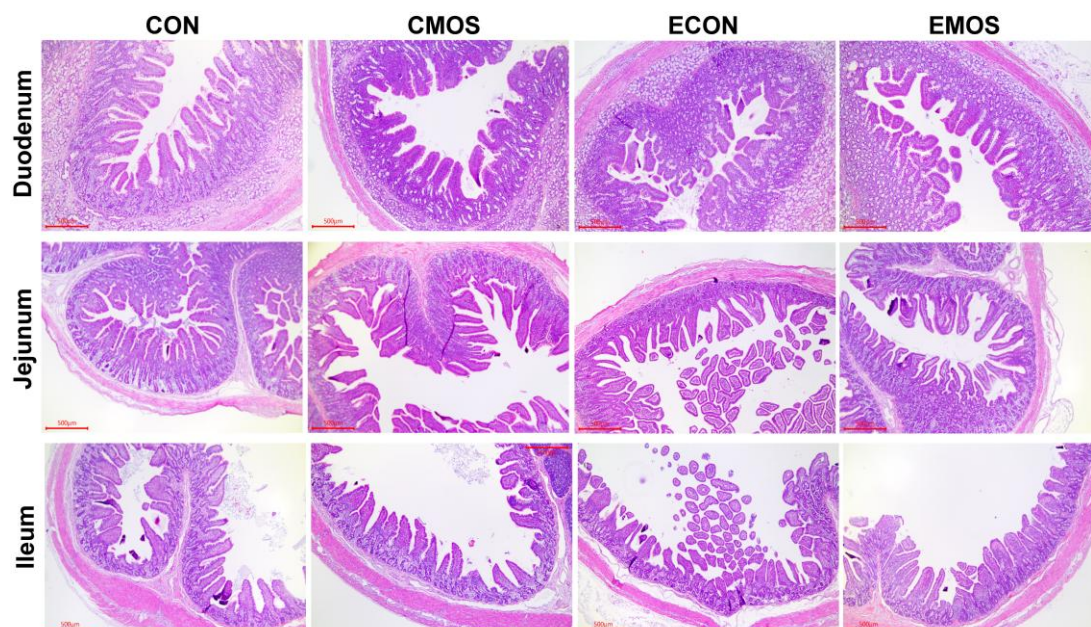


Figure 2. Effect of MOS supplementation on intestinal morphology in weaned pigs upon ETEC challenge (H&E; × 40). CON, pigs were fed with a basal diet; CMOS, pigs were fed with a MOS containing diet (0.6 g/kg); ECON, pigs were fed with a basal diet and challenged by ETEC; EMOS, pigs were fed with a MOS containing diet and challenged by ETEC.

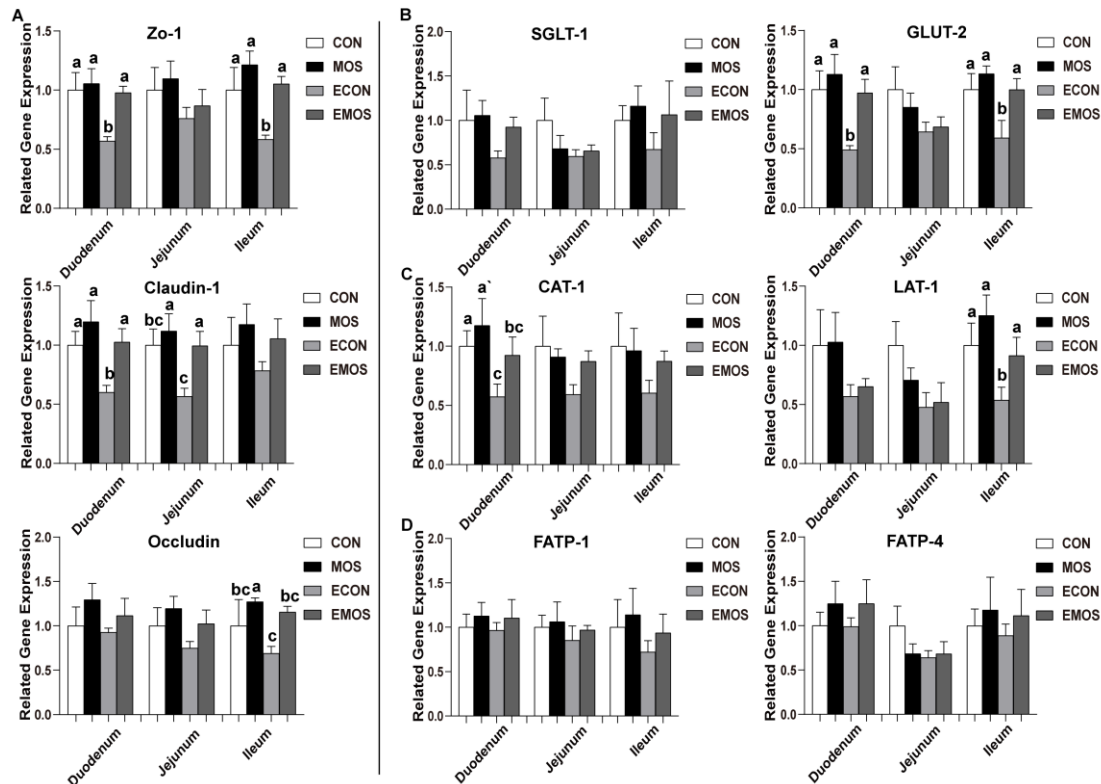


Figure 3. Effect of MOS supplementation on mucosal gene expressions in weaned pigs upon ETEC challenge. SGLT-1, sodium/glucose cotransporter-1; GLUT-2, glucose transporter-2; CAT-1, cationic amino acid transporter-1; LAT-1, L amino acid transporter-1; FATP, fatty acid transport proteins; ZO-1, zonula occludens-1. ^{a, b, c} mean values within a row with unlike superscript letters were significantly different ($P < 0.05$). CON, pigs were fed with a basal diet; CMOS, pigs were fed with a MOS containing diet (0.6 g/kg); ECON, pigs were fed with a basal diet and challenged by ETEC; EMOS, pigs were fed with a MOS containing diet and challenged by ETEC.

Tables**Table 1. Experiment basal diet composition and nutrient level**

Ingredients	%	Nutrient level	contents
Corn	28.31	Digestible energy (calculated, MJ/kg)	14.78
Extruded corn	24.87	Crude Protein (%)	19.68
Soybean meal	8.50	Calcium (%)	0.81
Extruded full-fat soybean	10.30	Available phosphorus (%)	0.55
Fish meal	4.20	Lysine	1.35
Whey powder	7.00	Methionine	0.42
Soybean protein concentrate	8.00	Methionine + cysteine	0.60
Soybean oil	2.00	Threonine	0.79
Sucrose	4.00	Tryptophan	0.22
Limestone	0.90		
Dicalcium phosphate	0.50		
NaCl	0.30		
L -Lysine HCl (78%)	0.47		
DL-Methionine	0.15		
L -Threonine (98.5%)	0.13		
Tryptophan (98%)	0.03		
Chloride choline	0.10		
Vitamin premix ¹	0.04		
Mineral premix ²	0.20		
Total	100		

¹The vitamin premix provided the following per kg of diet: 9000 IU of VA, 3000 IU of VD 3, 20 IU of VE, 3 mg of VK 3, 1.5 mg of VB1, 4 mg of VB 2, 3 mg of VB6, 0.02 mg of VB12, 30 mg of niacin, 15 mg of pantothenic acid, 0.75 mg of folic acid, and 0.1 mg of biotin. ²The mineral premix provided the following per kg of diet: 100 mg Fe, 6 mg Cu, 100 mg Zn, 4 mg Mn, 0.30 mg I, 0.3 mg Se.

²The diet was formulated based on the recommendation of NRC2012.

Table 2. Effect of MOS supplementation on ADFI and ADG in weaned pigs upon ETEC challenge

ITEM	Treatments				SEM	P-value		
	CON	CMOS	ECON	EMOS		MOS	ETEC	Interaction
1-19d								
ADFI(g/d)	430.72	440.41	426.02	434.39	18.96			
ADG(g/d)	292.22	305.89	289.00	301.44	10.63			
F: G	1.47	1.44	1.50	1.43	0.04			
19-21d								
ADFI(g)	501.80 ^a	505.87 ^a	463.73 ^b	488.60 ^{bc}	6.94	0.27	0.04	0.42
ADG(g)	396.00	412.67	364.00	393.33	12.94	0.40	0.35	0.82

ADFI, average daily feed intake; ADG, average daily gain; F: G, feed: gain ratio.

¹ Mean and total SEM are list in Separate columns (n=8).

²a, b, c mean values within a row with unlike superscript letters were significantly different ($P < 0.05$).

³CON, pigs were fed with a basal diet; CMOS, pigs were fed with a MOS containing diet (0.6 g/kg); ECON, pigs were fed with a basal diet and challenged by ETEC; EMOS, pigs were fed with a MOS containing diet and challenged by ETEC.

Table 3. Effect of MOS supplementation on nutrients digestibility in weaned pigs

ITEM	Treatments				SEM	P-value
	CON	CMOS	ECON	EMOS		
DM (%)	89.91	90.32	89.55	89.24	0.50	0.89
CP (%)	85.69 ^b	88.14 ^a	85.33 ^b	89.31 ^a	0.57	0.03
EE (%)	79.63	79.74	78.38	79.59	1.44	0.99
Ash (%)	70.06	73.50	68.41	73.73	1.18	0.35
GE (%)	86.96 ^b	90.96 ^a	86.91 ^b	91.03 ^a	0.75	0.04

DM, dry matter; CP, crude protein; EE, ether extract.

¹ Mean and total SEM are list in Separate columns (n=8).

²a, b mean values within a row with unlike superscript letters were significantly different ($P < 0.05$).

³CON, pigs were fed with a basal diet; CMOS, pigs were fed with a MOS containing diet (0.6 g/kg); ECON, pigs were fed with a basal diet and challenged by ETEC; EMOS, pigs were fed with a MOS containing diet and challenged by ETEC.

Table 4. Effect of MOS supplementation on intestinal morphology in weaned pigs upon ETEC challenge

ITEM	Treatments				SEM	P-value		
	CON	CMOS	ECON	EMOS		MOS	ETEC	Interaction
Duodenum								
Villus height (μm)	471.77 ^a	495.92 ^a	380.47 ^b	468.72 ^a	15.00	0.04	0.03	0.22
Crypt depth (μm)	288.52	278.19	343.24	286.98	11.73	0.16	0.18	0.32
V: C	1.64 ^a	1.78 ^a	1.10 ^b	1.63 ^a	0.10	0.03	0.02	0.34
Jejunum								
Villus height (μm)	493.19	496.27	450.72	489.06	14.11	0.49	0.41	0.56
Crypt depth (μm)	176.01	175.74	184.17	180.94	5.99	0.89	0.61	0.91
V: C	2.80	2.82	2.36	2.70	0.08	0.30	0.18	0.33
Ileum								
Villus height (μm)	415.06 ^a	436.62 ^a	317.75 ^b	403.84 ^a	17.32	0.09	0.04	0.29
Crypt depth (μm)	171.62 ^{bc}	156.45 ^b	203.08 ^a	165.91 ^b	6.08	0.02	0.05	0.26
V: C	2.42 ^a	2.79 ^a	1.56 ^b	2.43 ^a	0.14	0.01	0.01	0.12

V; C, Villus height: Crypt depth.

¹ Mean and total SEM are list in Separate columns (n=8).

²a, b, c mean values within a row with unlike superscript letters were significantly different ($P < 0.05$).

³CON, pigs were fed with a basal diet; CMOS, pigs were fed with a MOS containing diet (0.6 g/kg); ECON, pigs were fed with a basal diet and challenged by ETEC; EMOS, pigs were fed with a MOS containing diet and challenged by ETEC.

Table 5. Effect of MOS supplementation on mucosal enzyme activity in weaned pigs upon ETEC challenge

ITEM	Treatments				SEM	P-value		
	CON	CMOS	ECON	EMOS		MOS	ETEC	Interaction
Duodenum								
AKP (U/g prot)	1.19 ^a	1.20 ^a	0.62 ^{ab}	1.18 ^a	0.12	0.44	0.09	0.47
Lactase (U/mg prot)	11.80	12.33	4.43	11.20	1.43	0.19	0.13	0.26
Sucrase (U/mg prot)	103.99 ^a	123.45 ^a	56.26 ^b	102.06 ^a	8.73	0.04	0.03	0.38
Maltase (U/mg prot)	16.22	16.53	12.00	13.34	1.03	0.49	0.25	0.83
Jejunum								
AKP (U/g prot)	1.21	1.21	1.15	1.20	0.05	0.81	0.76	0.83
Lactase (U/mg prot)	94.56	98.75	69.66	92.50	9.16	0.50	0.43	0.64
Sucrase (U/mg prot)	536.73	547.85	475.36	526.36	47.70	0.77	0.69	0.85
Maltase (U/mg prot)	517.62	523.32	423.32	519.45	34.18	0.49	0.50	0.54
Ileum								
AKP (U/g prot)	2.37	2.41	2.06	2.16	0.11	0.74	0.22	0.90
Lactase (U/mg prot)	30.91 ^a	34.46 ^a	15.27 ^b	28.21 ^a	2.34	0.03	0.006	0.19
Sucrase (U/mg prot)	205.17	210.78	149.09	202.38	19.44	0.48	0.44	0.56
Maltase (U/mg prot)	162.05 ^a	191.26 ^a	98.31 ^c	152.96 ^{bc}	11.20	0.04	0.01	0.49

APK, alkaline phosphatase

¹ Mean and total SEM are list in Separate columns (n=8).

²a, b, c mean values within a row with unlike superscript letters were significantly different ($P < 0.05$).

³CON, pigs were fed with a basal diet; CMOS, pigs were fed with a MOS containing diet (0.6 g/kg); ECON, pigs were fed with a basal diet and challenged by ETEC; EMOS, pigs were fed with a MOS containing diet and challenged by ETEC.

Table 6. Effect of MOS supplementation on *Caecal* microbial populations in weaned pigs upon ETEC challenge

ITEM	Treatments				SEM	P-value		
	CON	CMOS	ECON	EMOS		MOS	ETEC	Interaction
Cecum(lg(copies/g))								
Total bacteria	10.43 ^{ab}	10.49 ^{ab}	10.35 ^b	10.77 ^a	0.07	0.06	0.40	0.16
Lactobacillus	5.62 ^{bc}	5.99 ^a	4.57 ^c	5.74 ^a	0.20	0.04	0.08	0.26
Escherichia coli	8.62 ^b	8.42 ^b	10.17 ^a	9.06 ^b	0.20	0.04	0.001	0.13
Bifidobacterium	6.68 ^a	7.01 ^a	5.49 ^b	6.97 ^a	0.22	0.04	0.07	0.09
Bacillus	8.57 ^{bc}	8.94 ^a	8.13 ^c	8.85 ^a	0.10	0.002	0.09	0.27

¹ Mean and total SEM are list in Separate columns (n=8).

²a, b, c mean values within a row with unlike superscript letters were significantly different ($P < 0.05$).

³CON, pigs were fed with a basal diet; CMOS, pigs were fed with a MOS containing diet (0.6 g/kg); ECON, pigs were fed with a basal diet and challenged by ETEC; EMOS, pigs were fed with a MOS containing diet and challenged by ETEC.

References

1. Fairbrother JM, Nadeau E, Gyles CL (2005) *Escherichia coli* in postweaning diarrhea in pigs: an update on bacterial types, pathogenesis, and prevention strategies. *Anim Health Res Rev* **6**, 17–39.
2. Cutler SA, Lonergan SM, Cornick N *et al.* (2007) Dietary inclusion of colicin e1 is effective in preventing postweaning diarrhea caused by F18-positive *Escherichia coli* in pigs. *Antimicrob Agents Chemother* **51**, 3830–3835.
3. Viswanathan VK, Hodges K, Hecht G (2009) Enteric infection meets intestinal function: how bacterial pathogens cause diarrhoea. *Nat Rev Microbiol* **7**, 110–119.
4. Miguel J, Rodriguez-Zas SL, Pettigrew J (2004) Efficacy of Bio-Mos for improving nursery pig performance. *Journal of Swine Health and Production* **12**, 296-307.
5. Tang Z-R, Yin Y-L, Nyachoti CM *et al.* (2005) Effect of dietary supplementation of chitosan and galacto-mannan-oligosaccharide on serum parameters and the insulin-like growth factor-I mRNA expression in early-weaned piglets. *Domest Anim Endocrinol* **28**, 430–441.
6. Chen YJ, Kwon OS, Min BJ *et al.* (2005) The Effects of Dietary Biotite V Supplementation as an Alternative Substance to Antibiotics in Growing Pigs. *Asian Australas. J. Anim. Sci* **18**, 1642–1645.
7. Roberfroid M (2007) Prebiotics: the concept revisited. *The Journal of nutrition*, **137**, 830S-837S.

8. Gänzle MG & Follador R (2012) Metabolism of oligosaccharides and starch in lactobacilli: a review. *Front Microbiol* **3**, 1-15.
9. Mussatto SI & Mancilha IM (2007) Non-digestible oligosaccharides: A review. *Carbohydrate Polymers* **68**, 587–597.
10. Smith DL, Nagy TR, Wilson LS *et al.* (2010) The effect of mannan oligosaccharide supplementation on body weight gain and fat accrual in C57Bl/6J mice. *Obesity (Silver Spring)* **18**, 995–999.
11. Baurhoo B, Ferket PR, Zhao X (2009) Effects of diets containing different concentrations of mannanoligosaccharide or antibiotics on growth performance, intestinal development, cecal and litter microbial populations, and carcass parameters of broilers. *Poult Sci* **88**, 2262–2272.
12. Cuskin F, Lowe EC, Temple MJ *et al.* (2015) Human gut Bacteroidetes can utilize yeast mannan through a selfish mechanism. *Nature* **517**, 165–169.
13. Castillo M, Martín-Orúe SM, Taylor-Pickard JA *et al.* (2008) Use of mannanoligosaccharides and zinc chelate as growth promoters and diarrhea preventative in weaning pigs: Effects on microbiota and gut function. *J Anim Sci* **86**, 94–101.
14. Jahanian R & Ashnagar M (2015) Effect of dietary supplementation of mannan-oligosaccharides on performance, blood metabolites, ileal nutrient digestibility, and gut microflora in *Escherichia coli*-challenged laying hens. *Poult Sci* **94**, 2165–2172.

15. Davis ME, Maxwell CV, Brown DC *et al.* (2002) Effect of dietary mannan oligosaccharides and(or) pharmacological additions of copper sulfate on growth performance and immunocompetence of weanling and growing/finishing pigs. *J Anim Sci* **80**, 2887–2894.
16. YE J-D, WANG K, LI F-D *et al.* (2011) Single or combined effects of fructo- and mannan oligosaccharide supplements and *Bacillus clausii* on the growth, feed utilization, body composition, digestive enzyme activity, innate immune response and lipid metabolism of the Japanese flounder *Paralichth*. *Aquaculture Nutrition* **17**, e902-e911.
17. D. W. Rozeboom, D. T. Shaw, R. J. Tempelman *et al.* (2005) Effects of mannan oligosaccharide and an antimicrobial product in nursery diets on performance of pigs reared on three different farms. *J Anim Sci* **83**, 2637-3644.
18. LeMieux FM, Southern LL, Bidner TD (2003) Effect of mannan oligosaccharides on growth performance of weanling pigs. *J Anim Sci* **81**, 2482–2487.
19. Burkey TE, Dritz SS, Nietfeld JC *et al.* (2004) Effect of dietary mannanoligosaccharide and sodium chlorate on the growth performance, acute-phase response, and bacterial shedding of weaned pigs challenged with *Salmonella enterica* serotype Typhimurium. *J Anim Sci* **82**, 397–404.
20. Hermes RG, Manzanilla EG, Martín-Orúe SM *et al.* (2011) Influence of dietary ingredients on in vitro inflammatory response of intestinal porcine epithelial cells challenged by an enterotoxigenic *Escherichia coli* (K88). *Comp Immunol*

Microbiol Infect Dis **34**, 479–488.

21. Gao Y, Han F, Huang X *et al.* (2013) Changes in gut microbial populations, intestinal morphology, expression of tight junction proteins, and cytokine production between two pig breeds after challenge with *Escherichia coli* K88: a comparative study. *J Anim Sci* **91**, 5614–5625.
22. Agazzi A, Perricone V, Zorini FO *et al.* (2020) Dietary manna oligosaccharides modulate gut inflammatory response and improved duodenal villi height in post-weaning piglets improving feed efficiency. *Animals* **10**, 1-14
23. Liu P, Piao XS, Thacker PA *et al.* (2010) Chito-oligosaccharide reduces diarrhea incidence and attenuates the immune response of weaned pigs challenged with *Escherichia coli* K88. *J Anim Sci* **88**, 3871–3879.
24. National Research Council (U.S.) (2012) *Nutrient requirements of swine*, 11th Edition. Washington D.C: National Academies Press.
25. AOAC (2005) Official Methods of Analysis of AOAC International. 18th Edition, AOAC International, Arlington, VA
26. Yang Y, Iji PA, Kocher A *et al.* (2008) Effects of dietary mannanoligosaccharide on growth performance, nutrient digestibility and gut development of broilers given different cereal-based diets. *J Anim Physiol Anim Nutr (Berl)* **92**, 650–659.
27. Wan J, Zhang J, Chen D *et al.* (2018) Alginate oligosaccharide-induced intestinal morphology, barrier function and epithelium apoptosis modifications have beneficial effects on the growth performance of weaned pigs. *J Anim Sci Biotechnol* **9**,

- 1-12.
28. King MR, Morel PCH, Revell DK *et al.* (2008) Dietary Bovine Colostrum Increases Villus Height and Decreases Small Intestine Weight in Early-weaned Pigs. *Asian Australas. J. Anim. Sci* **21**, 567–573.
 29. Fleige S, Walf V, Huch S *et al.* (2006) Comparison of relative mRNA quantification models and the impact of RNA integrity in quantitative real-time RT-PCR. *Biotechnol Lett* **28**, 1601–1613.
 30. Wu T, Zhang Y, Lv Y *et al.* (2018) Beneficial Impact and Molecular Mechanism of *Bacillus coagulans* on Piglets' Intestine. *Int J Mol Sci* **19**, 1-17.
 31. Campbell JM, Crenshaw JD, Polo J (2013) The biological stress of early weaned piglets. *J Anim Sci Biotechnol* **4**, 1-4.
 32. Pluske JR, Hampson DJ, Williams IH (1997) Factors influencing the structure and function of the small intestine in the weaned pig: a review. *Livestock Production Science* **51**, 215–236.
 33. Nochta I, Halas V, Tossenberger J *et al.* (2010) Effect of different levels of mannan-oligosaccharide supplementation on the apparent ileal digestibility of nutrients, N-balance and growth performance of weaned piglets. *J Anim Physiol Anim Nutr (Berl)* **94**, 747–756.
 34. Che TM, Johnson RW, Kelley KW *et al.* (2012) Effects of mannan oligosaccharide on cytokine secretions by porcine alveolar macrophages and serum cytokine concentrations in nursery pigs. *J Anim Sci* **90**, 657–668.

35. Klasing KC (1988) Nutritional aspects of leukocytic cytokines. *The Journal of nutrition* **118**, 1436–1446.
36. O’Quinn, P.R, Funderburke, D.W., Tibbetts, G..W. (2001). Effects of dietary supplementation of mannan oligosaccharides on sow and litter performance in a commercial production system. *J. Anim. Sci.* **79** (Suppl.1), 212.
37. Newman, K.E.; Newman, M.C. (2001) Evaluation of mannan-oligosaccharide on the microflora and immunoglobulin status of sows and piglet performance. *J. Anim. Sci.* **79** , 189-191.
38. Savage TF, Cotter P, Zakrzewska EI (1996) The effect of feeding mannanoligosaccharide on immunoglobulins, plasma IgG and bile IgA of Wrolstad MW male Turkeys. *Poult Sci* **75**, 143–148.
39. Liu Y, Che TM, Song M *et al.* (2013) Dietary plant extracts improve immune responses and growth efficiency of pigs experimentally infected with porcine reproductive and respiratory syndrome virus. *J Anim Sci* **91**, 5668–5679.
40. Wan Y, Fu Y, Wang F *et al.* (2018) Protective Effects of a Lipid Extract from Hard-Shelled Mussel (*Mytilus coruscus*) on Intestinal Integrity after Lipopolysaccharide Challenge in Mice. *Nutrients* **10**, 1-16.
41. Yi GF, Carroll JA, Allee GL *et al.* (2005) Effect of glutamine and spray-dried plasma on growth performance, small intestinal morphology, and immune responses of *Escherichia coli* K88+-challenged weaned pigs. *J Anim Sci* **83**, 634–643.

422. Xu Q, Jitkaew S, Choksi S *et al.* (2017) The cytoplasmic nuclear receptor RAR γ controls RIP1 initiated cell death when cIAP activity is inhibited. *Nat Commun* **8**, 1-15.
43. Yang Y, Iji PA, Choct M (2007) Effects of Different Dietary Levels of Mannanooligosaccharide on Growth Performance and Gut Development of Broiler Chickens. *Asian Australas. J. Anim. Sci* **20**, 1084–1091.
44. Chen G, Li C, Chen K (2016) Fructooligosaccharides: A Review on Their Mechanisms of Action and Effects. *Studies in Natural Products Chemistry* **48**, 209–229.
45. Spring P, Wenk C, Dawson KA *et al.* (2000) The effects of dietary mannaoligosaccharides on cecal parameters and the concentrations of enteric bacteria in the ceca of salmonella-challenged broiler chicks. *Poult Sci* **79**, 205–211.
46. Duan X, Tian G, Chen D *et al.* (2019) Mannan oligosaccharide supplementation in diets of sow and (or) their offspring improved immunity and regulated intestinal bacteria in piglet1. *J Anim Sci* **97**, 4548–4556.
47. Schokker D, Fledderus J, Jansen R *et al.* (2018) Supplementation of fructooligosaccharides to suckling piglets affects intestinal microbiota colonization and immune development. *J Anim Sci* **96**, 2139–2153.
48. Yang Y, Iji PA, Kocher A *et al.* (2008) Effects of mannanoligosaccharide in broiler chicken diets on growth performance, energy utilisation, nutrient digesti-

- bility and intestinal microflora. *Br Poult Sci* **49**, 186–194.
49. Basuroy S, Seth A, Elias B *et al.* (2006) MAPK interacts with occludin and mediates EGF-induced prevention of tight junction disruption by hydrogen peroxide. *Biochem J* **393**, 69–77.
50. Chen H, Mao X, He J *et al.* (2013) Dietary fibre affects intestinal mucosal barrier function and regulates intestinal bacteria in weaning piglets. *Br J Nutr* **110**, 1837–1848.
51. Sangild PT, Tappenden KA, Malo C *et al.* (2006) Glucagon-like peptide 2 stimulates intestinal nutrient absorption in parenterally fed newborn pigs. *J Pediatr Gastroenterol Nutr* **43**, 160–167.
52. Yanagida O, Kanai Y, Chairoungdua A *et al.* (2001) Human L-type amino acid transporter 1 (LAT1): characterization of function and expression in tumor cell lines. *Biochimica et Biophysica Acta (BBA) - Biomembranes* **1514**, 291–302.